

Children come first; they are our future

- We build strong **positive** relationships and trust; as a highly inclusive school we celebrate individuality and promote well-being through **excellent** pastoral provision.
- We promote a thirst for knowledge and a love of learning by teaching an ambitious knowledge rich curriculum that inspires curiosity and is relevant for our community.
- We empower all children through our high expectations to be tolerant, respectful, **determined** and **independent** active members of a diverse local, national and global community.
- We encourage all children to achieve in all areas so that they can reach their potential.

Welcome

Meet the Teacher

Year 4





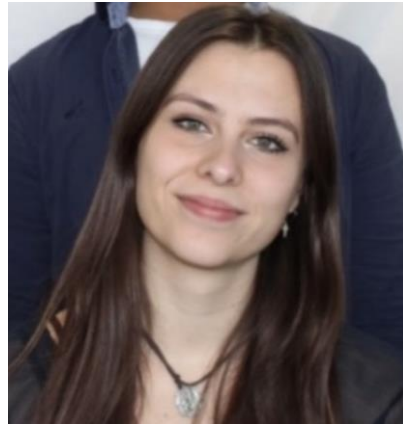
Year 4 Teaching Team



Mrs Wye



Mrs Farrell



Ms De Coriolis



Ms Kamat



Mrs Fuller



4W will be Constable Class

4F will be Wishaw Class



School Timings

- ▶ Attendance: It is essential to be in as much as possible to maximise learning and give children the best chances at success and integration. As our attendance policy quotes:

Staplehurst School is committed to the continuous raising of achievement of all of our pupils. Regular attendance is critical if our pupils are to be successful and benefit from the opportunities presented to them.

One of our basic principles is to celebrate success. Good attendance is fundamental to a successful and fulfilling school experience. Staplehurst School actively promotes 100% attendance for all of our pupils and we use a variety of weekly, termly and annual awards, to promote good attendance and punctuality.

- ▶ Term starts (for children) on **Monday 4th September 2023**.
- ▶ Learning starts 8.35am, children should be in class at this time ready to begin.
- ▶ Pick up is from 3:15pm via the external classroom doors.



Expectations for September

At Staplehurst School, we show...



STAPLEHURST
SCHOOL

▶ **Positivity**

- ▶ A positive attitude to school and learning.
- ▶ Being kind and supportive to each other.

▶ **Respect**

- ▶ Showing respect to adults and each other.
- ▶ Being polite and well behaved in the classroom and around school.

▶ **Independence**

- ▶ Being independent and motivated with learning.

▶ **Determination**

- ▶ Being determined and resilient learners.
- ▶ 100% effort at all times.

▶ **Excellence**

- ▶ Setting a good example to the rest of the school.
- ▶ Demonstrating excellence in behaviour, attitude and learning.



Behaviour and Expectations

- ▶ PRIDE Points & PRIDE Rewards
- ▶ Verbal and written praise
- ▶ Certificates in Celebration Assembly
- ▶ Reward equipment at playtime
- ▶ Pride Time
- ▶ Prizes e.g. Reading Prizes for 30 reads, Guitars for TTRS



Reading



- ▶ Reading records should be handed in every day, with home reading recorded in them. Pupils aim for 30 reads a term.
- ▶ Records will be checked on Tuesdays and Fridays. New reading books will then be given if an adult has signed to say the current book has been read fully.
- ▶ Messages should go via the year group email, or urgent messages e.g. pickup or appointments via the office, not via the reading record please.
- ▶ Daily reading lessons. Fluency and Extended read sessions build fluency, vocabulary and prosody (reading with expression and relevant speed). Close read sessions develop analysis of the text.



School uniform, PE Kit and other equipment.

- ▶ In September pupils need to return in winter uniform.
- ▶ Summer and winter uniform as per policy. One pair of stud earrings only. Bows in navy or school yellow and no bigger than the palm of your child's hand. Hair below shoulders needs to be tied back.
- ▶ Blue P.E. t-shirt, blue or black shorts, plimsolls or trainers for outside, bare feet or plimsolls for inside.
- ▶ Tracksuits or sweatshirts (blue or black) may be worn when cold. No leggings. Sweatshirts should not have a hood. Hair must be tied back, and no jewellery should be worn.
- ▶ If your child is unable to take part in P.E, please send in a note to explain why. Repeated missing kit will result children using the school's own kit, for them to access learning.



Curriculum Coverage

- T1) What are the similarities and differences between Ancient Civilisations? (History)
- T2) Why are rivers important and how do humans influence them? (Geography)
- T3) Why was the River Nile significant to the longevity of the Ancient Egyptian Civilisation? (History)
- T4) How are humans affecting the world's rainforests? (Geography)
- T5) How did the Anglo-Saxons and Vikings change England? (History)
- T6) How is land used in South East England? (Geography)

Curriculum themed weeks STEM Week, World Week, Keeping Healthy Week





Quality-First Teaching

Our teaching and learning policy captures our approach to how children at Staplehurst learn:

Staplehurst is a school that is happy, purposeful and stimulating where each child's needs are viewed individually, by a staff of highly trained classroom practitioners who demonstrate excellence underpinned by high expectations and professionalism.

Our aim is to instil, in each unique pupil, a love of learning; develop their confidence in order to reach their full potential; and, underpinned by a body of powerful knowledge, cultivate the lifelong skills of independence, creative thinking, team work and effective participation.

We consider ourselves to be a knowledge-rich school, whereby children master a body of subject-specific knowledge defined by the school. Skills are generally an outcome of our curriculum, not its purpose. At Staplehurst, we emphasise big ideas and invaluable knowledge that we want our children to acquire.

- ▶ Same-Day Intervention
- ▶ Formative assessment
- ▶ Retrieval Practice
- ▶ Effective use of feedback
- ▶ Quality first teaching
- ▶ Precision teaching



Homework

- ▶ One piece of Maths & Spelling/SPAG every week.
- ▶ 30 minutes a week.
- ▶ Focus on consolidation of key concepts taught. Homework should not be overly challenging with the intention to offer opportunity to practice, increase confidence and boost speed/stamina of working.
- ▶ To be handed out on a Friday and handed back in by Tuesday. Completion will be expected.
- ▶ Children also need to be reading every night, **and practise times tables.**
- ▶ Please remember to fill in the reading record (PRIDE Points are given).



Ways to help your child at home

- ▶ Helping to ensure your child arrives at school on time every day.
- ▶ Regular reading.
- ▶ Times tables practice. ([TT Rockstars](#))
- ▶ Ensuring homework is completed and handed in on time, and when completing internet research, aiding children in finding key points.
- ▶ Visiting the library to research topics.
- ▶ Visiting places of interest
- ▶ Support pupils with holiday learning tasks.



MTC



- ▶ The multiplication tables check (MTC) is statutory for all year 4 pupils in England.
- ▶ The purpose of the MTC is to determine whether pupils can recall their times tables fluently, which is essential for future success in mathematics. It will help schools to identify pupils who have not yet mastered their times tables, so that additional support can be provided.
- ▶ Schools must administer the MTC to all eligible year 4 pupils in June (exact dates, and further information, to follow).



MTC



- ▶ The MTC is an on-screen check consisting of 25 times table questions.
- ▶ Your child will be able to answer 3 practice questions before taking the actual check. They will then have 6 seconds to answer each question. On average, the check should take no longer than 5 minutes to complete.
- ▶ TTRS acts as great practise!



Communication

- ▶ Parents can share messages and key information (non-urgent) via the school office or at the end of the day with the class teacher.
- ▶ Updates and minor issues can be discussed at pickup.
- ▶ Should you require a meeting to discuss an issue please inform your teacher in advance and a mutually convenient time will be arranged.
- ▶ Parents' evenings are held 2 x per year to discuss your child's learning.
- ▶ Key information about the school is posted on our website, including: the weekly newsletter; school times and term dates; events and announcements; curriculum information and policies and procedures.
- ▶ The newsletter is published weekly and sent to parent weekly via SCOPAY and published on our website by 12 noon on Monday during term time.
- ▶ Please telephone us to communicate brief information about your child that the school needs to know in an emergency, e.g., to let us know that you will be late collecting your child. We ask parents to telephone the school on 01580 891765.
- ▶ The school office is open between 8:30am to 4:00pm, during term-time. At all other times there is an answering service available to take your message.
- ▶ Whilst email is preferable, **attendance@staplehurst.kent.sch.uk**, telephone calls are appropriate to notify us that your child will be absent from school
- ▶ There are times when we feel that we would like to say something about the service or treatment that we receive. If you feel you need to complain, then please follow the procedure outlined here:
- ▶ In the first instance you should speak to your child's class teacher. If you are still dissatisfied, please contact the phase leader /or the deputy headteacher as soon as you can to make an appointment. If the matter cannot be resolved, please contact the headteacher. If you remain dissatisfied with the outcome, you should follow the school's Complaints Procedure, which is set out in the school Complaints Policy. The Complaints Policy is available on our website.



Key Events



STAPLEHURST
SCHOOL

- ▶ High quality, engaging learning experiences every day
(Biscuit Making, Clay Pot Sculpture, Egyptian Art)
- ▶ Themed weeks
(World Week, STEM Week, Keeping Healthy Week)
- ▶ Trips and visits
(Drusilla's, Field Study Walk, Water Workshop)

Any Questions

- ▶ Year group email: year4@staplehurst.kent.sch.uk